

~ Free Pattern ~

BABY ALPACA SCARF

4 Harness "Houndstooth" Pattern

Colors in Threading & Treading Draft:

Blue = Natural Grey (dark)

Yellow = Natural Lightest Grey (light)



*Scarf woven by Phyllis Narus with
R&M Yarns 2/16 Baby Alpaca
Nat. Grey & Nat. Lightest Grey*

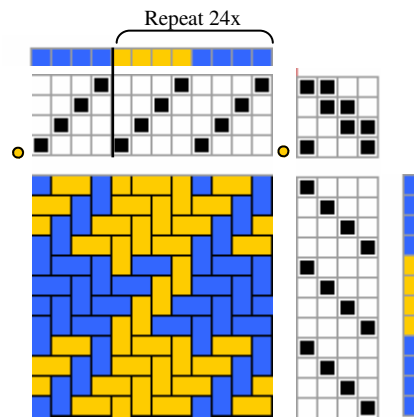
THREADING AND TREADING DRAFT

● = Floating Selvage

102 ends Nat. Grey (includes floats)

96 ends Nat. Lightest Grey

198 total ends



Equipment: 4 Shaft Loom; 8 or 12 dent reed; 2 shuttles; 2 bobbins

Yarn Used: 2/16 Baby Alpaca Natural Lightest Grey & Natural Grey (R&M Yarns)
600 yards of each color (includes loom waste and small sampling)

Warp Length: 198 ends (includes 2 floats, loom waste & sampling)

Sett: Warp: 24 epi (2/dent in 12 dent reed or 3/dent in 8 dent reed)
Weft: 24 ppi

Dimensions: Width in Reed: 8.25"
Length: Weave 70" under tension on loom (includes hems)

Finished size after washing & hemming: 7.25" x 65"

Note: If you don't "sample," you can weave a longer scarf.